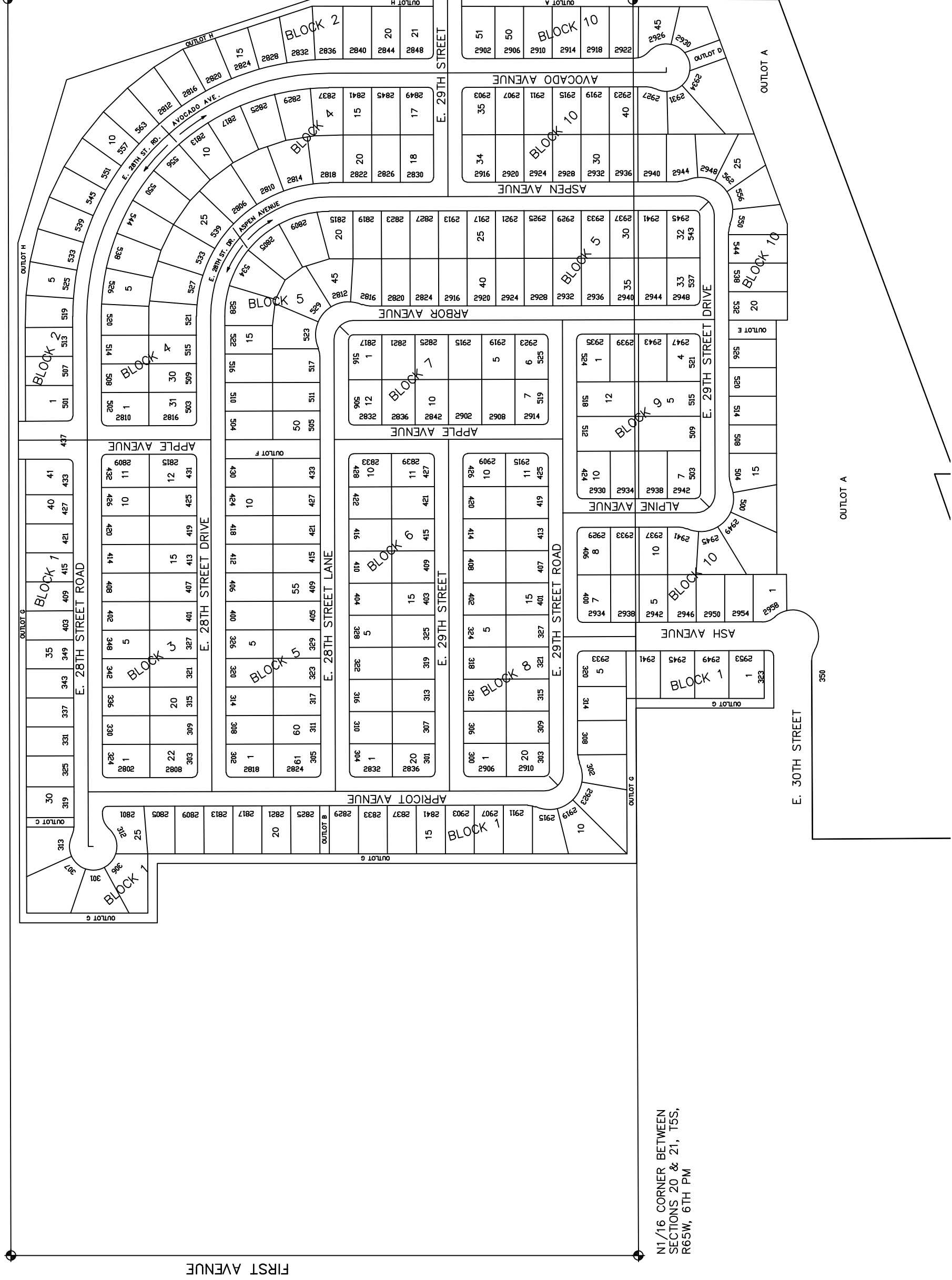


RIVERVIEW FARM SUBDIVISION

NW CORNER OF SECTION 21,
T5S, R65W, 6TH PM

E. 28TH STREET (US 34 BYPASS R.O.W.)

N1/4 CORNER OF SECTION
21, T5S, R65W, 6TH PM



N1/16 CORNER OF THE
CENTERLINE OF SECTION
21, T5S, R65W, 6TH PM

N1/16 CORNER BETWEEN
SECTIONS 20 & 21, T5S,
R65W, 6TH PM

FIRST AVENUE